



Third Party Works Product and Service Catalogue in Cyprus

Delivering the exceptional every day





Here in Cyprus as the Infrastructure Service Provider (ISP) to the Defence Infrastructure Organisation (DIO), **Mitie** has placed infrastructure and estate management across the Sovereign Base Areas at the heart of its plans to provide our customers with what they require: we know what's important in the places you live, work, train and play.

In addition to the facilities management services we provide to you via the DIO, we also offer a wide range of additional products and services that you can purchase from us and our supply chain partner, the Cyprus Service Provider (CSP).

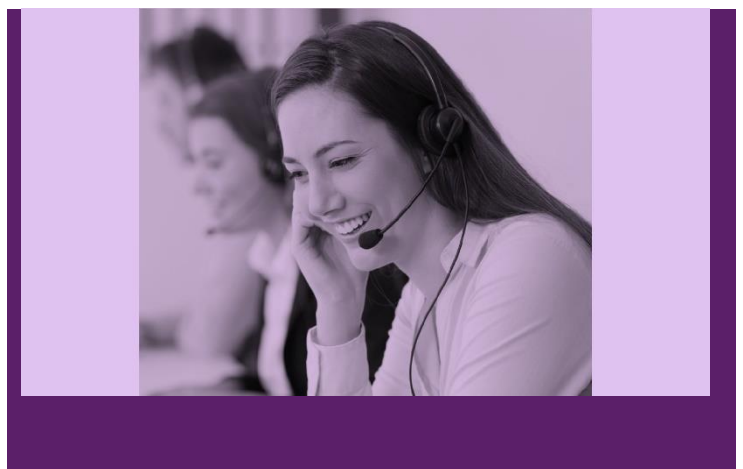
In this catalogue, you can browse what we have on offer for you.



Whether that's the installation, maintenance and repair of an air conditioning unit, garden maintenance, electrical and plumbing works or even large-scale projects such as the erection of a complex building to meet a defined need, we are here to help.

If you need further information about what we provide or the process to follow, please call our Helpdesk on Freephone 80002400 (or 25962477). Alternatively, you can send us an email on cyprus.helpdesk@interserve.mod.uk

We'll get back to you as soon as we can to discuss your needs.





Standard Products and Services	Notes	Rough order of magnitude €
A		
<p>Air Conditioning Units</p> <p>1) Supply and Fix wall type A/C unit (Cooling/Heating) at low level:</p> <p>a) 9000 BTU b) 12000 BTU c) 18000 BTU d) 22000 BTU e) 24000 BTU</p> <p>2) Supply and Fix wall type A/C unit (Cooling/Heating) at high level:</p> <p>a) 9000 BTU b) 12000 BTU c) 18000 BTU d) 22000 BTU e) 24000 BTU</p> <p>3) Removal of existing A/C unit (Any Capacity) for scrap, at low level:</p> <p>4) Removal of existing A/C unit (Any Capacity) for scrap, at high level:</p> <p>5) Removal of existing A/C unit (Any Capacity) for re-use, at low level:</p> <p>6) Removal of existing A/C unit (Any Capacity) for re-use, at high level:</p> <p>7) New electrical installation for A/C unit (Any Capacity) provided that there is a spare way in the Distribution Board. If no spare ways available in the existing D/B then the user will have to be contacted for replacing the D/B.</p> <p>8) Fixing only A/C split unit wall type (Any Capacity) at low level, supplied by others.</p>	<p>⇒ The Prices for Items 1 and 2 DO NOT include for the power supply to the AC unit. This will be charged extra as per Item 7.</p>	<p>€594.78/Nr €617.02/Nr €875.80/Nr €994.34/Nr €1087.39/Nr</p> <p>€698.95/Nr €720.96/Nr €979.96/Nr €1098.46/Nr €1191.60/Nr</p> <p>€128.86/Nr</p> <p>€193.29/Nr</p> <p>€144.96/Nr</p> <p>€214.76/Nr</p> <p>€307.49/Nr</p> <p>€187.91/Nr</p>



Standard Products and Services	Notes	Rough order of magnitude €
<p>9) Fixing only A/C split unit wall type (Any Capacity) at high level, supplied by others.</p> <p>10) Annual Maintenance of A/C units: I unit or first of further units Thereafter Two to Four units Five units and above</p> <p>11) Rewiring of A/C units</p>	⇒	<p>€300.67/Nr</p> <p>€101.47/Nr</p> <p>€22.55/Nr</p> <p>€16.91/Nr</p> <p>€91.16/Nr</p>
B		
<p>Blinds: Roller blinds Venetian Blinds</p>		<p>€90.20/m²</p> <p>€26.46/m²</p>
C		
<p>Carpets: Supply and fix carpets</p>		/m ²
D		
<p>Doors: Replace doors with Fire Doors:</p> <p>a) Single door 30 mins FR factory painted Add for 1 No vision panel</p> <p>b) Single door 60 mins FR factory painted Add for 1 No vision panel</p> <p>c) Double door 30 mins FR factory painted Add for 2 Nos vision panels</p> <p>d) Double door 60 mins FR factory painted Add for 2 Nos vision panels</p>		<p>€744.58/Nr</p> <p>€61.63/Nr</p> <p>€1309.83/Nr</p> <p>€82.69/Nr</p> <p>€1461.53/Nr</p> <p>€117.20/Nr</p> <p>€2619.78/Nr</p> <p>€165.47/Nr</p>

Standard Products and Services	Notes	Rough order of magnitude €
E		
<p>Electrical Fittings - Installation of:</p> <p>a) Single socket b) Double socket c) Switch</p> <p>Electrical Appliances – Supply and Install:</p> <p>a) Fridge b) Cooker c) Washing machine d) Tumble dryer e) Dishwasher</p> <p>ETC Testing:</p> <p>Electrical Pat Testing:</p> <p>One appliance or item to be tested. Thereafter Two to five appliances or items to be tested Six or more appliances or items to be tested</p> <p>Electrical meter :</p> <p>a) Replacement SPN b) Replacement TPN</p>	<p>New installation of wiring point in a distance not exceeding 5m from the existing D/Board</p> <p>The rates include for the removal from site and the disposal of old appliance</p> <p>The rate is valid provided a wall opening is in place and no other enabling work is required for connection of the flexible exhaust tube to wall is needed</p> <p>Not able to provide price since the cost is directly related to the size of the installation to be tested</p> <p>The rate provided is per appliance or item to be tested</p>	<p>€137.82/Nr €140.51/Nr €197.68/Nr</p> <p>€63.13/Nr €63.13/Nr €63.13/Nr €63.13/Nr</p> <p>Depends on building</p> <p>€45.09/Nr €11.27/Nr €5.64/Nr</p> <p>€107.11/Nr €231.14/Nr</p>

Standard Products and Services	Notes	Rough order of magnitude €
F		
<p>Flag poles: Supply and Install Flag poles</p> <p>Fencing and Gates: a) Chain Link Fence: 1200mm b) Chain Link Fence: 1800mm c) Gate: 1000mm wide/1200mm high d) Gate: 1000mm wide/1800mm high</p>		<p>€77.31/m €90.20/m €350.93/Nr €470.76/Nr</p>
G		
<p>Generators - Delivery, Installation and Technical support. Capacity: a) 10KVA b) 40 KVA c) 100 KVA</p> <p>Graves: a) Digging of Single Grave b) Digging of Double Grave c) New Headstone d) Interment of Ashes e) Extra Cost for Emblem f) Re-write Headstone</p> <p>Replace Grass Matting</p> <p>Provision of Grass Plastic Matting</p>	<p>The rates quoted are daily with maximum up to a month rental period and with the generator to be operating continuously (24Hrs per day operation)</p>	<p>€45.09/day €73.29/day €124.02/day</p> <p>€774.49/Nr €1084.55/Nr €823.07/Nr €45.09/Nr €161.07/Nr €268.45/Nr</p>
H		
I		



Standard Products and Services	Notes	Rough order of magnitude €
J		
K		
L		
LPG Inspection (bottle installation):	The rate is for LPG bottle installation only	€55.84/Nr
M		
N		
Notice Boards: Supply and installation of Notice Boards 1200x1000mm		€112.75/Nr
O		
P		
Painting: a) 2 coats emulsion paint: walls and ceilings internally b) Fine Textured Masonry Paint: concrete or rendered surfaces: externally c) Fine Textured Masonry Paint: roughcast rendered surfaces: externally		€5.91/m ² €13.15/m ² €16.37/m ²
Q		
R		

Standard Products and Services	Notes	Rough order of magnitude €
S		
<p>Shades to external areas: Supply and installation of galvanized metal sheets to carports on existing posts: 2600x5400mm (single)</p> <p>Swimming Pools: Clean and carry out minor repairs to swimming pools</p> <p>Signs: Supply and Install Signs</p>		<p>€653.74/Nr</p> <p>€142.65/Nr</p>
T		
<p>Tables and Chairs: Supply and Install Tables and Chairs: a) Table b) Chair</p>		
U		
V		
W		
<p>Water meter: Replacement 15mm</p>		€81.51/Nr
X		
Y		
Z		

Notes:

*These prices will remain current up to 22/08/2022; a revised price list will be issued thereafter.

**All above prices exclude VAT.



Please note that the estimated costs in this catalogue are what we describe in the trade as 'rough order of magnitude'. We have included these in our catalogue to give you a ballpark estimate before you decide if it is a product or service, you wish to source from us. We ask you to bear in mind that there are many factors that need to be taken into account before we can provide a more accurate cost estimate that lists the specific requirements for what you need.

For example, you may want us to install an air conditioning unit (ACU) at your home. This could be on the ground floor, or the first- floor. You may need a modest **BTU (British Thermal Unit)** ACU or chose to have a larger capacity ACU. We may need to undertake extensive modifications to the electrical system in your home or it may be a relatively straightforward job. As you can imagine, the examples here are just a few of the many factors that need to be taken into account. It is also important to note that there may be variances between estimates for similar types of work in different locations due again to a number of factors.

Third Party Works Application Process

If your application is for your SFA, fill out the TPW application form electronically (supplied by your Housing Officer) & email Housing for approval.

All other TPW applications (supplied by your QM) are to be submitted electronically to your Station QM for approval.

Once approved, the TPW will be forwarded to the Cyprus Helpdesk for processing.

TPW requests for Electrical testing or servicing can be forwarded directly to the Cyprus Helpdesk.

Please submit your TPW application way in advance of your desired completion date. The process, once all approvals are granted and submitted to the Cyprus Helpdesk, will take at the least, 10 working days before an Engineer can assess risks, estimate time of completion and then supply you with a quote.

Please note that acceptance of the quote in writing and payment will be required before work can commence.